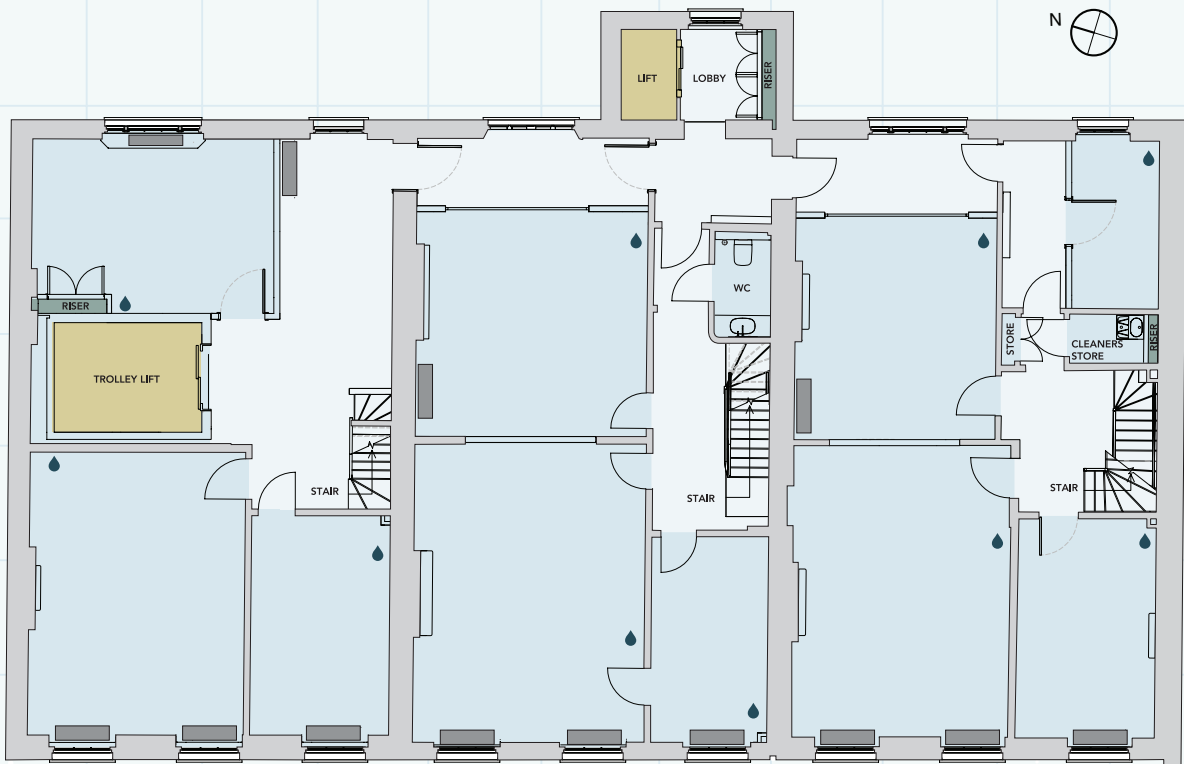


# THIRD

2,088 Sq Ft / 194 Sq M

## PARK CRESCENT MEWS WEST



NOTE: all areas are approximate and will be verified on completion in accordance with RICS Code of Measuring Practice.

Medical Core Lift Plant Capped off water, drainage & electricity for hand basins

142-146

HARLEY STREET

Marylebone W1