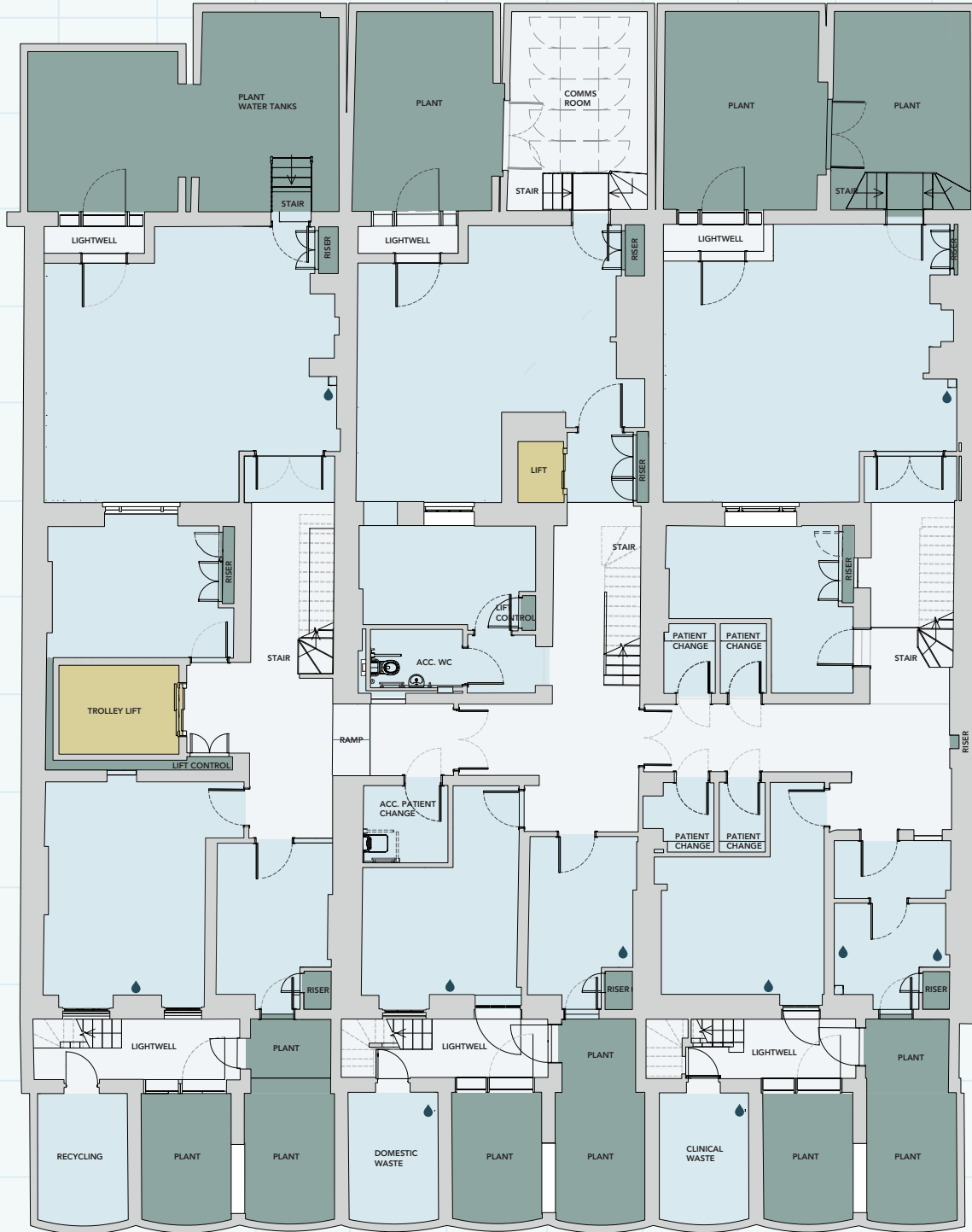


# BASEMENT

4,077 Sq Ft / 379 Sq M

PARK CRESCENT MEWS WEST



NOTE: all areas are approximate and will be verified on completion in accordance with RICS Code of Measuring Practice.

■ Medical   ■ Core   ■ Lift   ■ Plant   ● Capped off water, drainage & electricity for hand basins

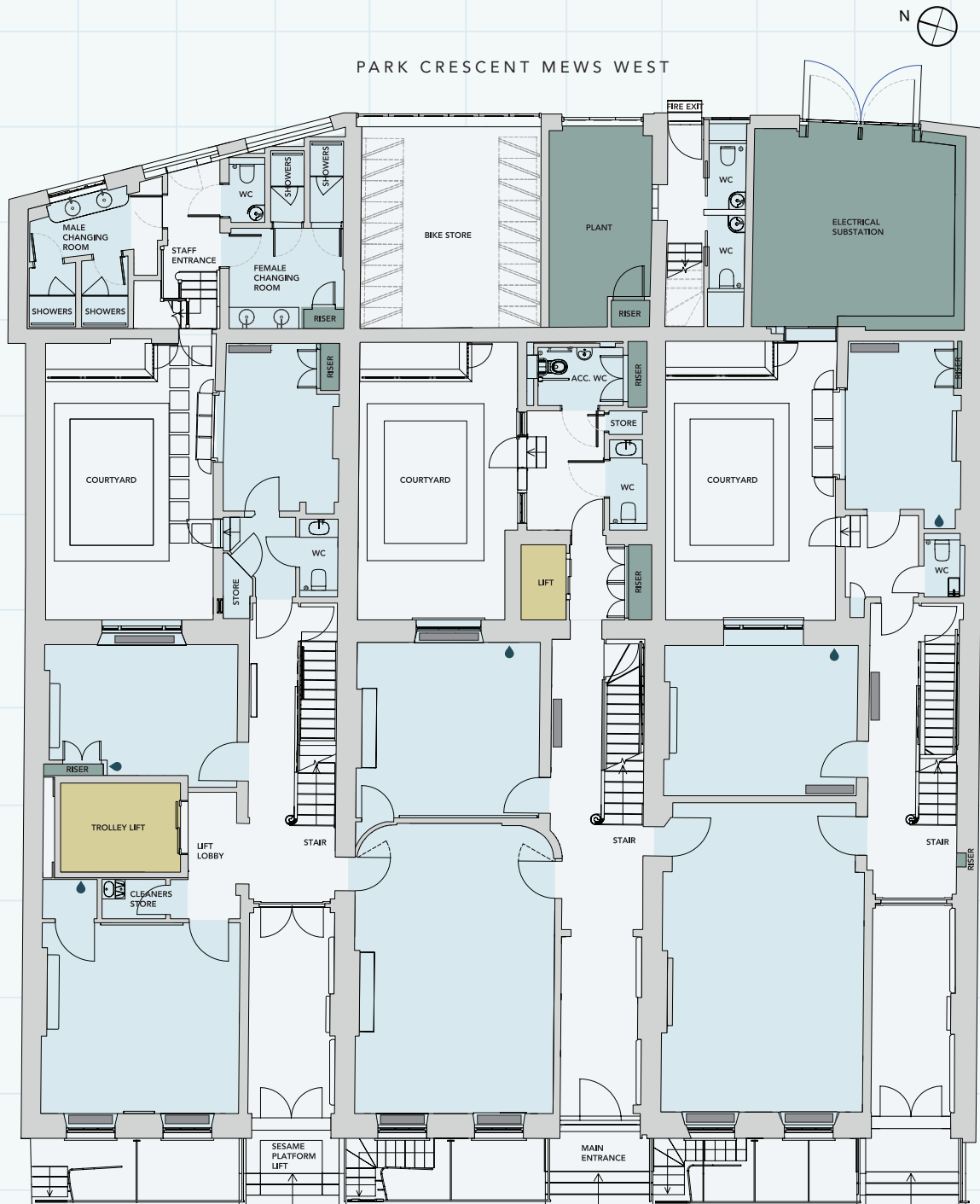
142-146

HARLEY STREET

Marylebone W1

# GROUND

2,595 Sq Ft / 241 Sq M



NOTE: all areas are approximate and will be verified on completion in accordance with RICS Code of Measuring Practice.

■ Medical   ■ Core   ■ Lift   ■ Plant   ● Capped off water, drainage & electricity for hand basins

142-146

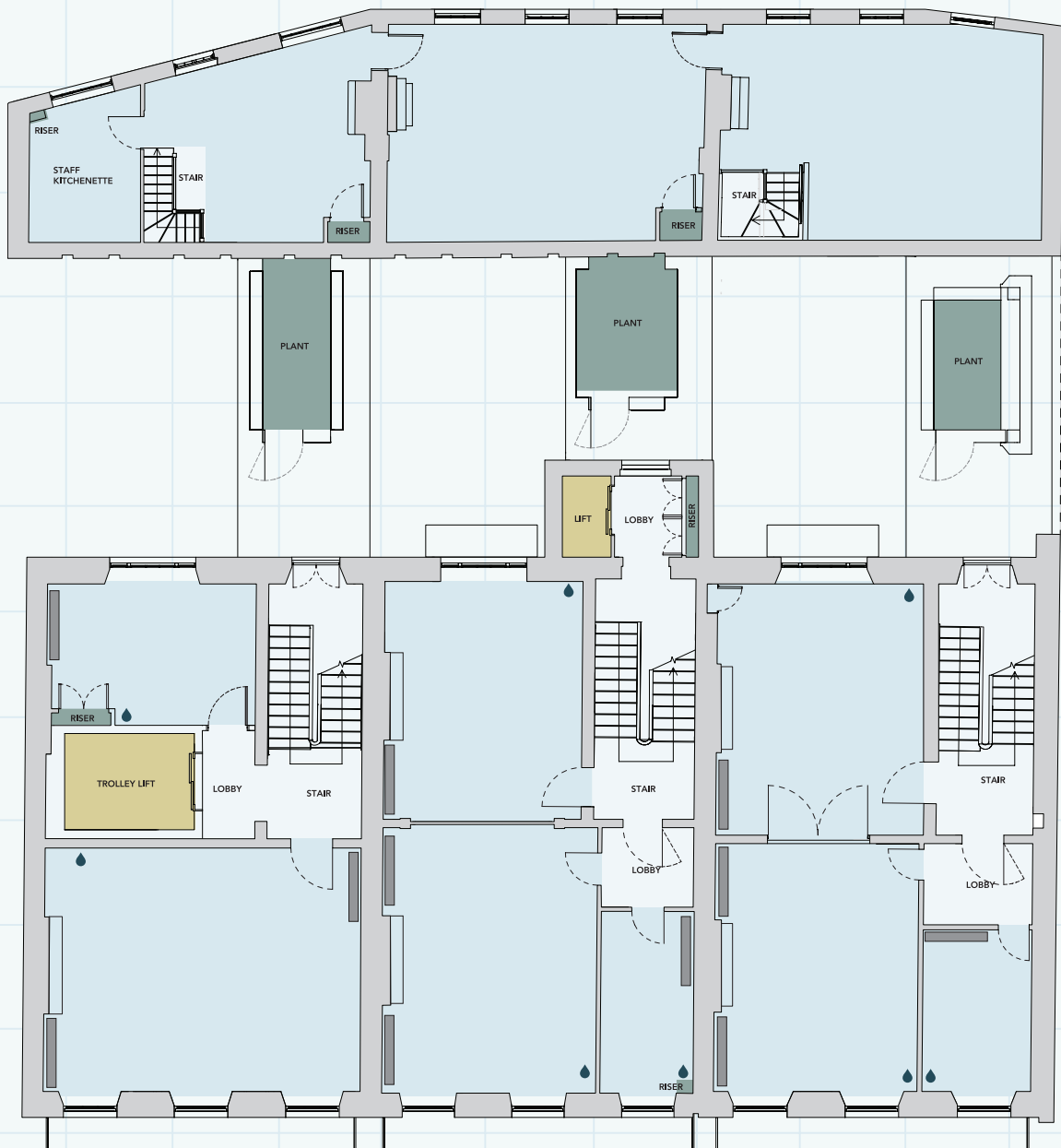
HARLEY STREET

Marylebone W1

# FIRST

3,224 Sq Ft / 299 Sq M

PARK CRESCENT MEWS WEST



NOTE: all areas are approximate and will be verified on completion in accordance with RICS Code of Measuring Practice.

Medical Core Lift Plant Capped off water, drainage & electricity for hand basins

142-146

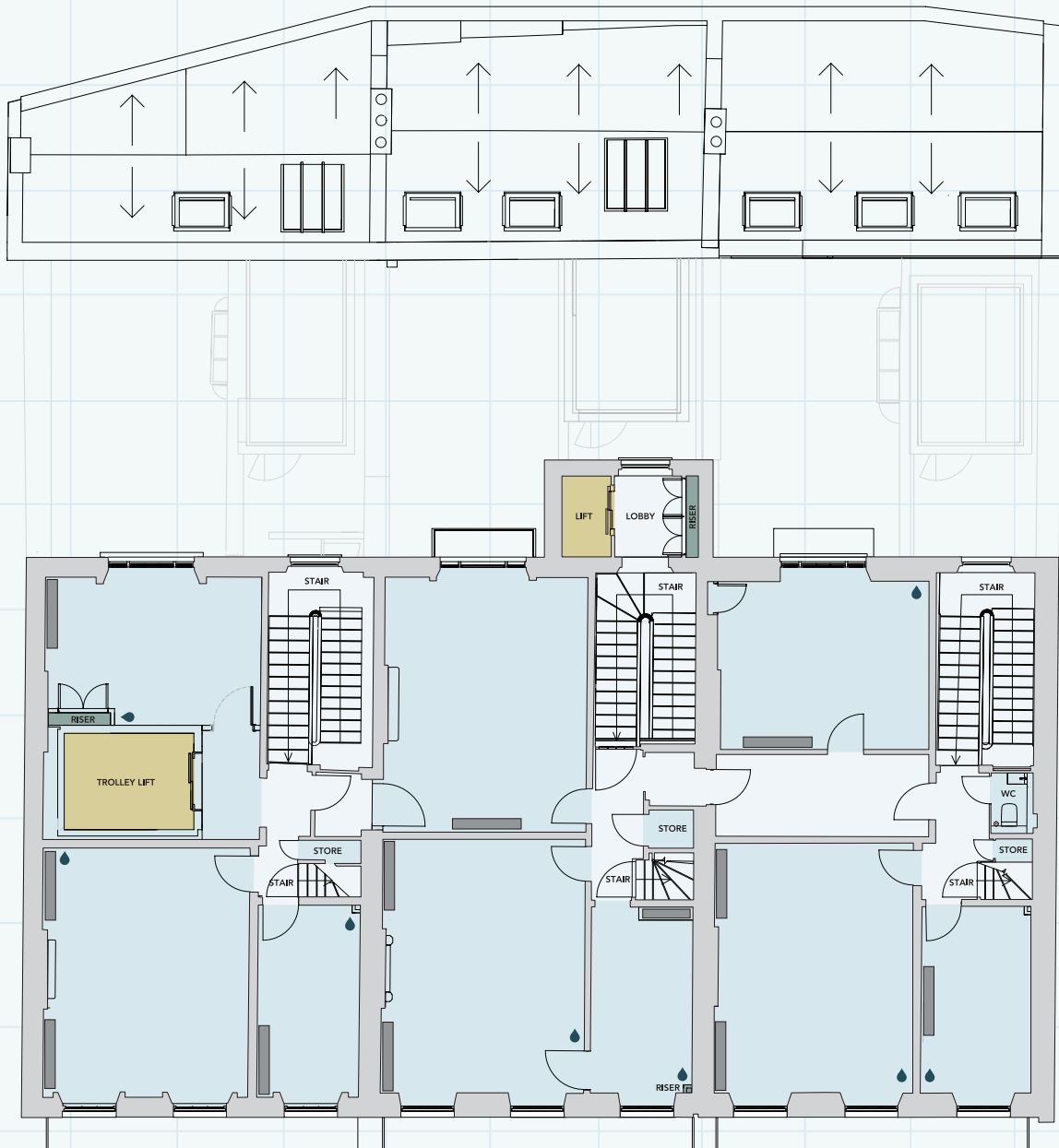
HARLEY STREET

Marylebone W1

# SECOND

2,084 Sq Ft / 194 Sq M

PARK CRESCENT MEWS WEST



NOTE: all areas are approximate and will be verified on completion in accordance with RICS Code of Measuring Practice.

Medical Core Lift Plant Capped off water, drainage & electricity for hand basins

142-146

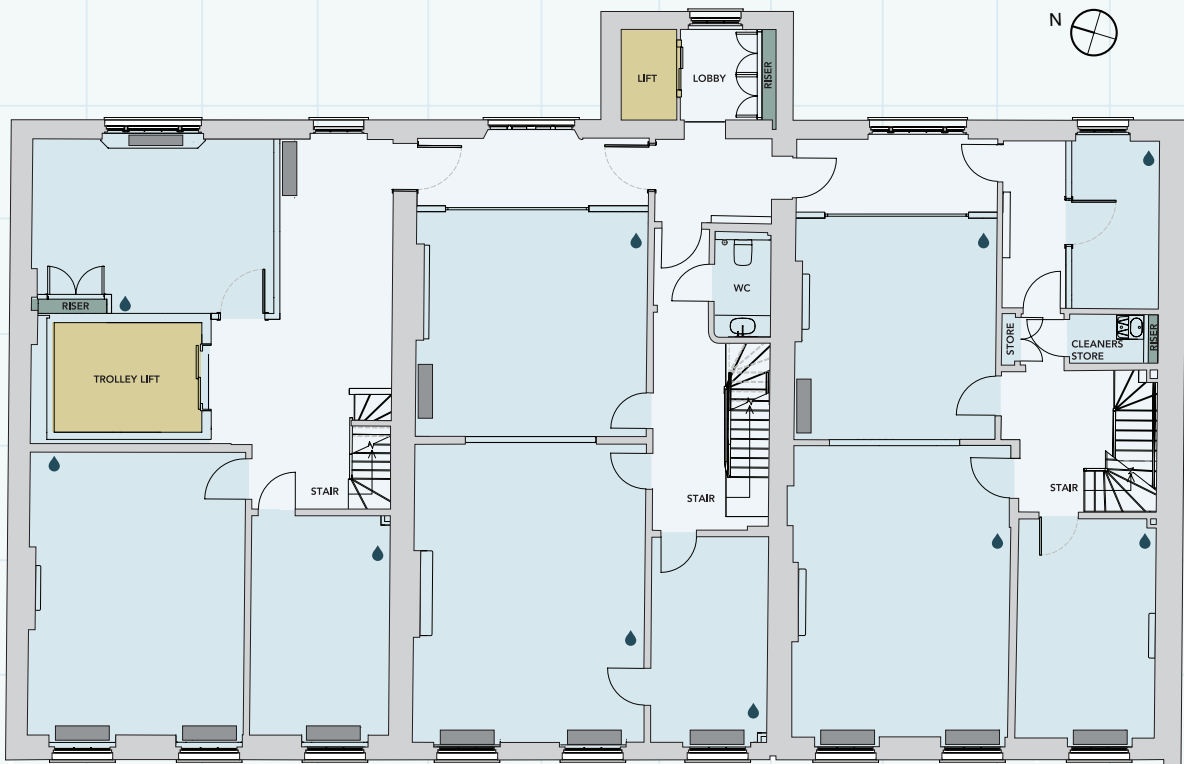
HARLEY STREET

Marylebone W1

# THIRD

2,088 Sq Ft / 194 Sq M

## PARK CRESCENT MEWS WEST



NOTE: all areas are approximate and will be verified on completion in accordance with RICS Code of Measuring Practice.

Medical Core Lift Plant Capped off water, drainage & electricity for hand basins

142-146

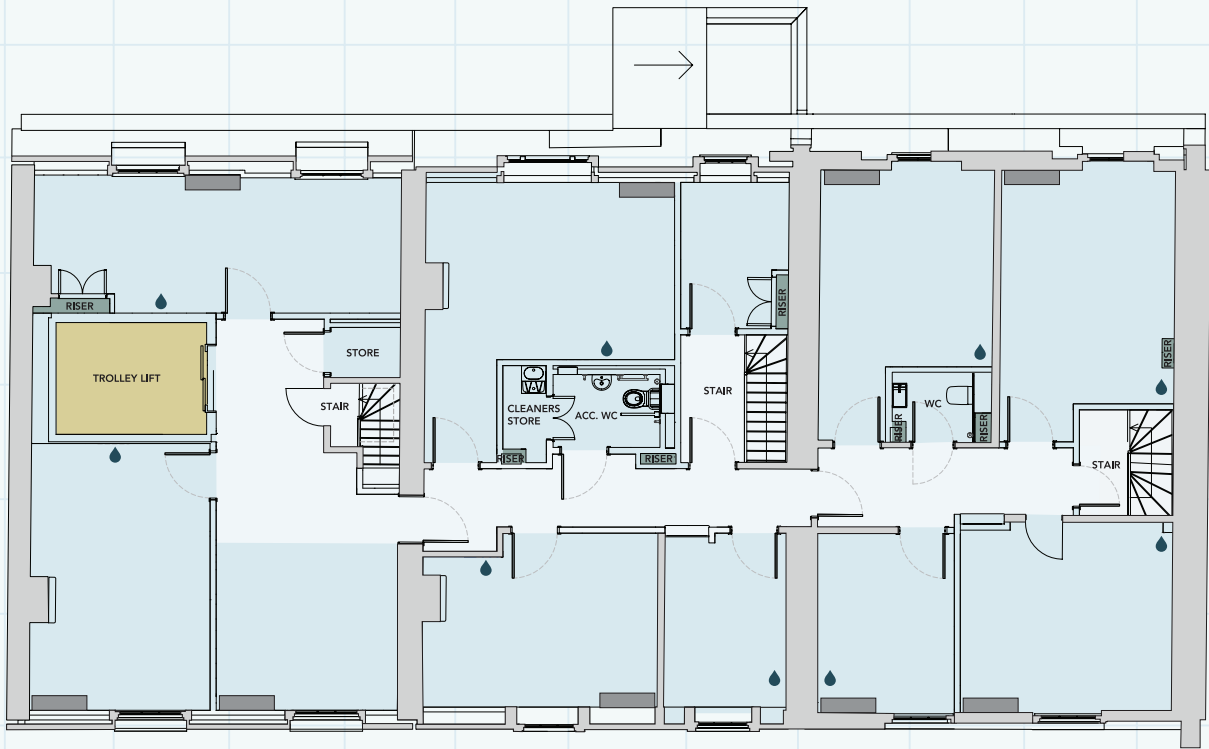
HARLEY STREET

Marylebone W1

# FOURTH

1,587 Sq Ft / 147 Sq M

PARK CRESCENT MEWS WEST



NOTE: all areas are approximate and will be verified on completion in accordance with RICS Code of Measuring Practice.

Medical Core Lift Plant Capped off water, drainage & electricity for hand basins

142-146

HARLEY STREET

Marylebone W1