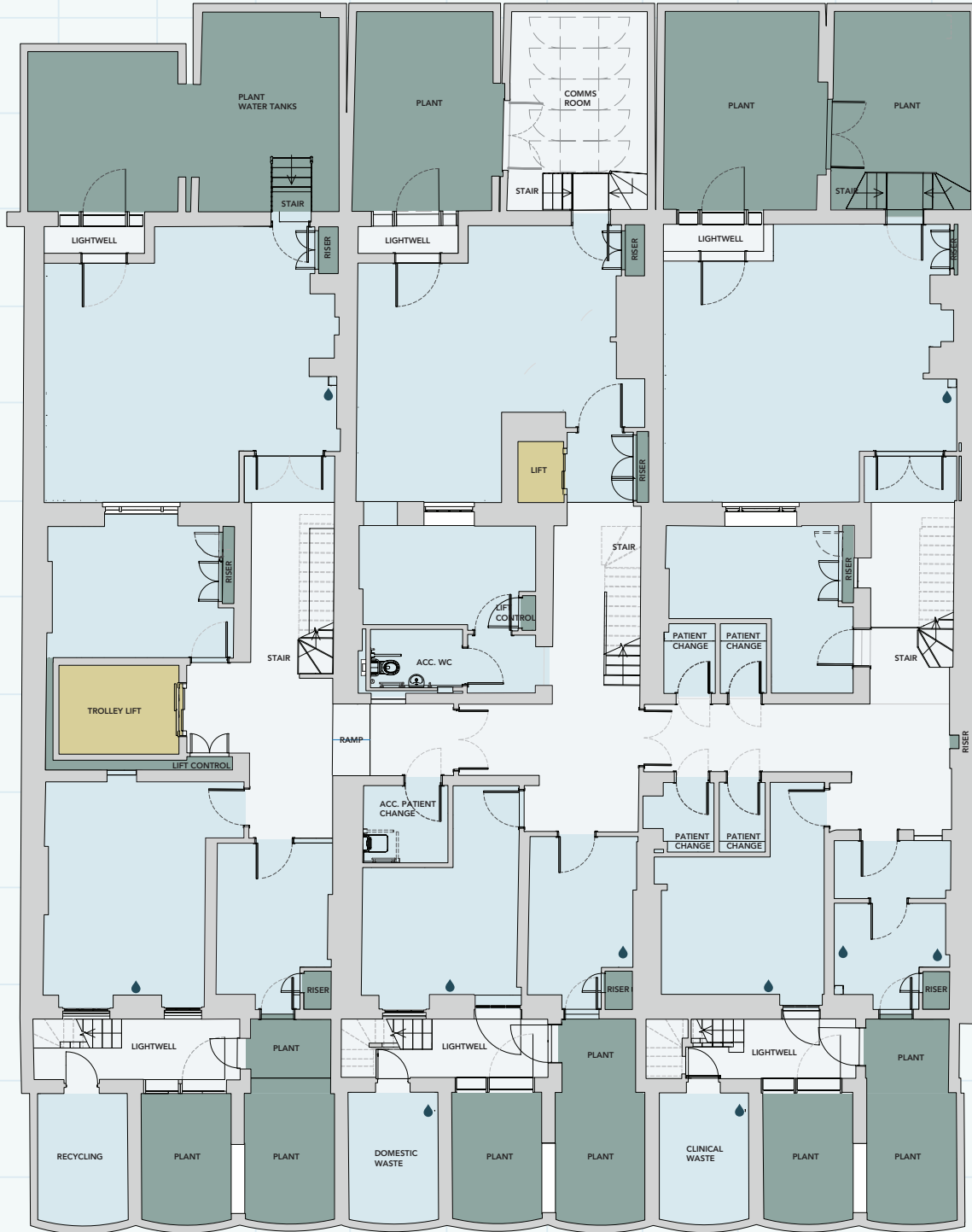


BASEMENT

4,077 Sq Ft / 379 Sq M

PARK CRESCENT MEWS WEST



NOTE: all areas are approximate and will be verified on completion in accordance with RICS Code of Measuring Practice.

■ Medical ■ Core ■ Lift ■ Plant ● Capped off water, drainage & electricity for hand basins

142-146

HARLEY STREET

Marylebone W1